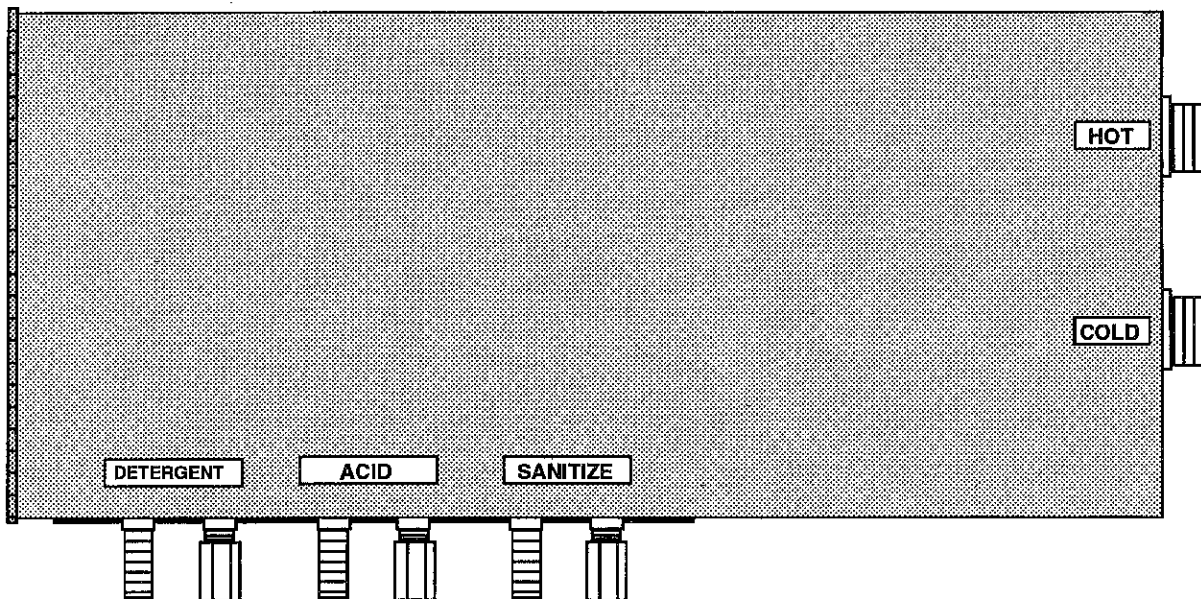




9590/9595, 9590-A/9595-A THREE-PUMP DISPENSER MODULES

- ① MOTOR DRIVEN PERISTALTIC PUMPS
- ② SWITCH PROGRAMMABLE TIMING TO SET PUMP OUTPUT (9590/9595 ONLY)
- ③ HOT AND COLD WATER VALVES (9590 ONLY)
- ④ DETERGENT, ACID, AND SANITIZE CAPACITY - 300 OZ
- ⑤ INPUT PLATE





9590/9595 3-PUMP DISPENSER MODULE INSTALLATION

1. FOR 9590 ONLY: Install plumbing for hot and cold water lines with garden hose shut-off valves on each line, within 4' of where the module will be installed. (Two 6' water hoses are provided). For fast fill, use 3/4" plumbing to shut-off valves.
2. Install the module on the wall.
 - A. If possible, do not install above the wash vat.
 - B. A 20' water hose has been provided for attaching the water valves to the input plate.
 - C. 25' of 1/4" O.D. rigid tubing has been provided for the chemical feed lines.
3. Install the input plate on the wash vat.
4. CHEMICAL FEED LINES--Each pump has a barbed input nipple for the 5/16" I.D. input tubing assembly, and a compression fitting for the 1/4" O.D. rigid output tubing.
 - A. OUTPUT LINES--Insert the 1/4" O.D. rigid output tubing into the compression fitting. Tighten fitting nut 3/4 turn. Insert the other end into a grommet in the input plate.
 - B. INPUT LINES--Attach the 5/16" I.D. flexible input tubing assembly to the barbed nipple, and clamp with the supplied plastic clamp. Place the screened ends into their respective chemical containers. Cut off excess tubing so it slopes upward to the pump.
5. Water input to the wash vat. (9590 ONLY)
 - A. Attach the 3/4" tubing between the water valves and the nipples on the input plate.
 - B. Clamp with hose clamp.
6. Attach the 6' long water hoses. (9590 ONLY)
 - A. Hot on top.
 - B. Cold on bottom.

TURN FAUCETS ON.
7. Attach the 1/2" ID pressure switch tubing to the input plate. Tubing should be cut off 6" below the required level of water in the wash vat.
8. See control module installation instructions for the electrical wiring.

ADJUSTMENTS (9590/9595 only)

THE DISPENSE TIMERS START WHEN THE WATER STARTS.

DETERGENT, ACID, and SANITIZE TIMERS-- The dispense timers are adjustable from 1.0 to 1023 seconds. The pumps run at 120 R.P.M. and dispense 30 OZ. / MIN. Multiply the amount of chemical required by **2** for the pump run time in seconds. Set dispense timers for the pump run time in seconds.

EXAMPLE: 60 OZ. CHEMICAL REQUIRED.
 60 OZ. X 2 = 120 SECONDS = (8-16-32-64) TIMER SWITCHES ON.

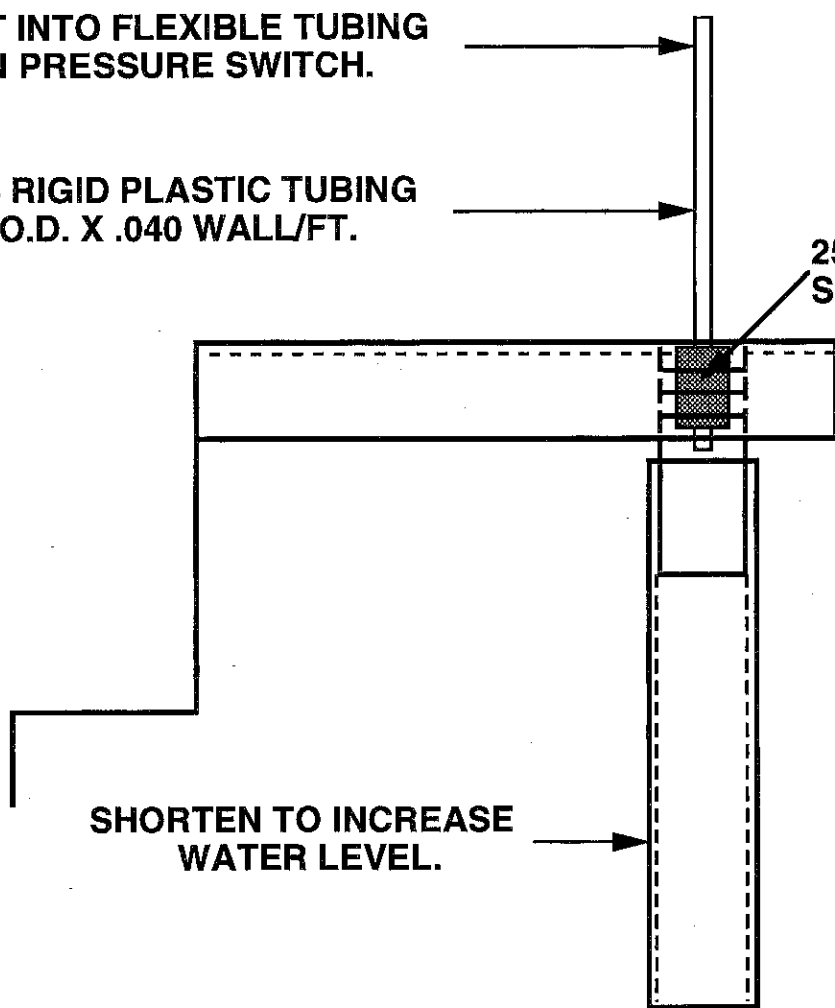


PRESSURE SWITCH TUBING INSTALLATION INSTRUCTIONS

INSERT INTO FLEXIBLE TUBING
ON PRESSURE SWITCH.

2784 RIGID PLASTIC TUBING
1/4" O.D. X .040 WALL/FT.

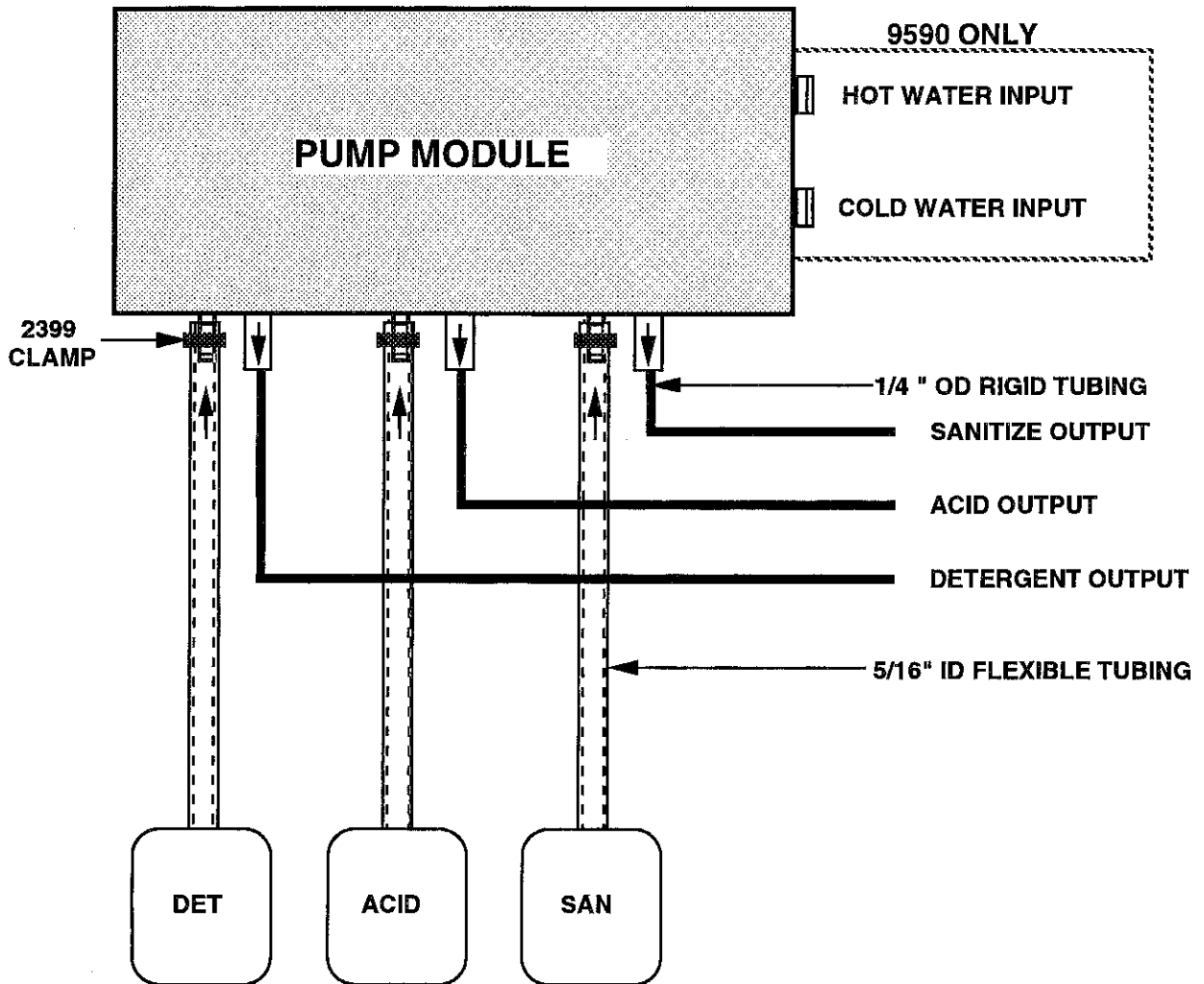
2576 PRESSURE
SWITCH BUSHING



SHORTEN TO INCREASE
WATER LEVEL.



9590/9595 INSTALLATION

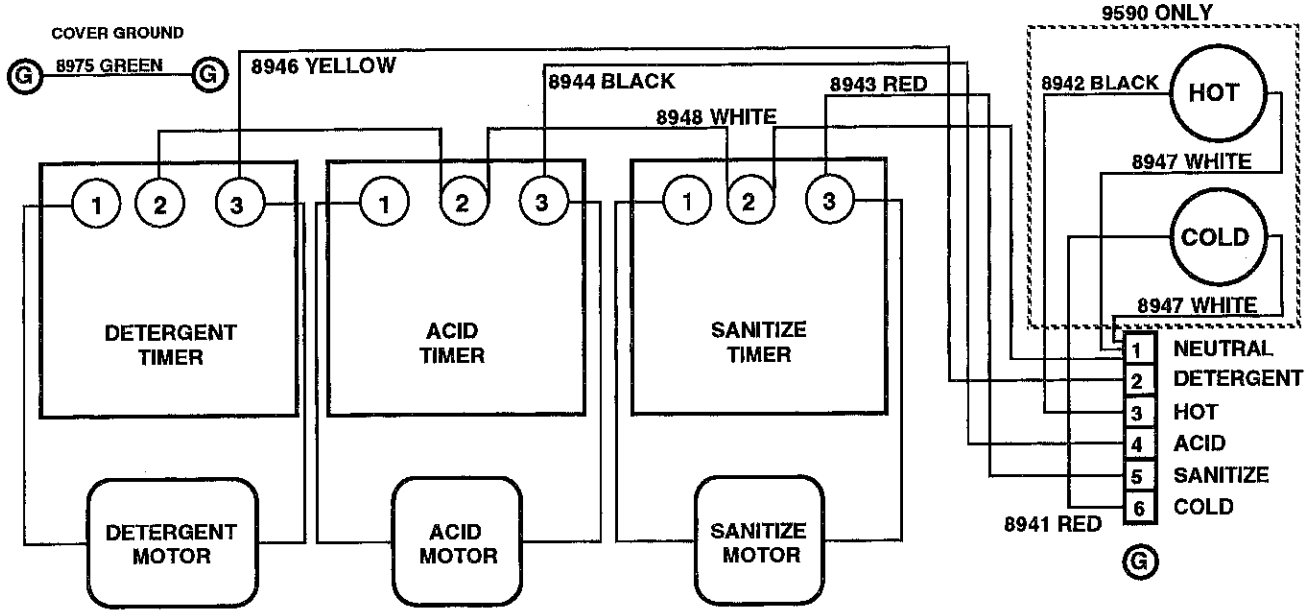


9590/9595 PUMP CALIBRATION CHART

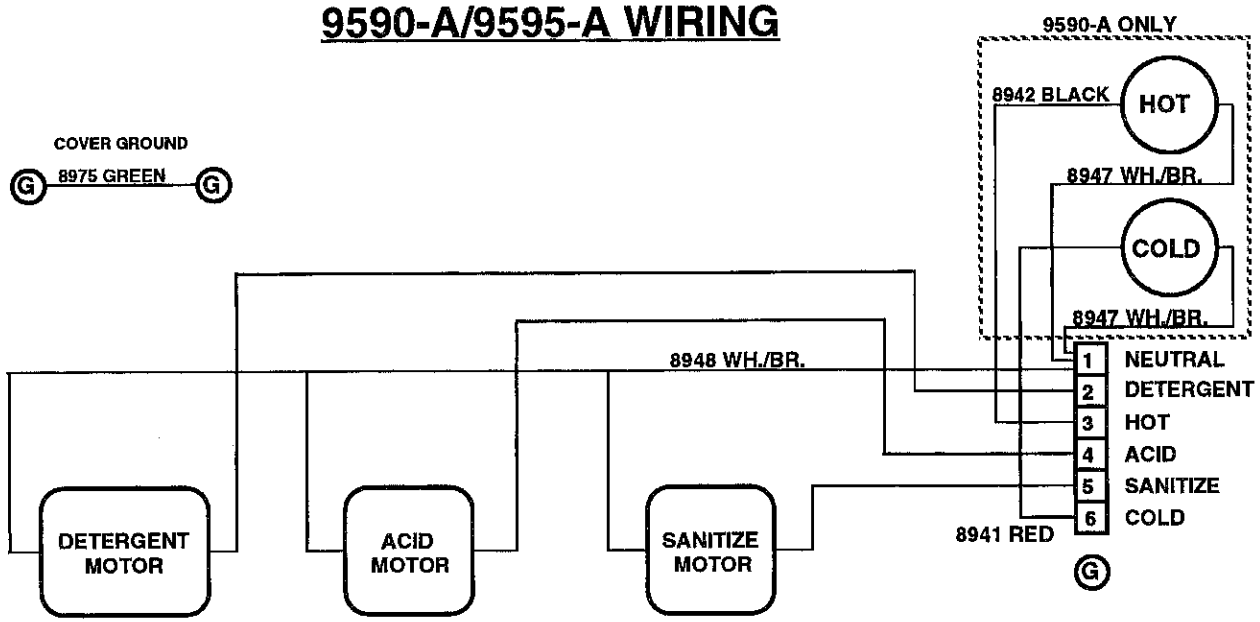
OUTPUT IN OZ	SECONDS	SWITCH ON	OUTPUT IN OZ II	SECONDS II	SWITCH ON II
0.50	1	1	26.00	52	32-16-4
1.00	2	2	26.50	53	32-16-4-1
1.50	3	1-2	27.00	54	32-16-4-2
2.00	4	4	27.50	55	32-16-4-2-1
2.50	5	4-1	28.00	56	32-16-8
3.00	6	4-2	28.50	57	32-16-8-1
3.50	7	4-2-1	29.00	58	32-16-8-2
4.00	8	8	29.50	59	32-16-8-2-1
4.50	9	8-1	30.00	60	32-16-8-4
5.00	10	8-2	30.50	61	32-16-8-4-1
5.50	11	8-2-1	31.00	62	32-16-8-4-2
6.00	12	8-4	31.50	63	32-16-8-4-2-1
6.50	13	8-4-1	32.00	64	64
7.00	14	8-4-2	32.50	65	64-1
7.50	15	8-4-2-1	33.00	66	64-2
8.00	16	16	33.50	67	64-2-1
8.50	17	16-1	34.00	68	64-4
9.00	18	16-2	34.50	69	64-4-1
9.50	19	16-2-1	35.00	70	64-4-2
10.00	20	16-4	35.50	71	64-4-2-1
10.50	21	16-4-1	36.00	72	64-8
11.00	22	16-4-2	36.50	73	64-8-1
11.50	23	16-4-2-1	37.00	74	64-8-2
12.00	24	16-8	37.50	75	64-8-2-1
12.50	25	16-8-1	38.00	76	64-8-4
13.00	26	16-8-2	38.50	77	64-8-4-1
13.50	27	16-8-2-1	39.00	78	64-8-4-2
14.00	28	16-8-4	39.50	79	64-8-4-2-1
14.50	29	16-8-4-1	40.00	80	64-16
15.00	30	16-8-4-2	40.50	81	64-16-1
15.50	31	16-8-4-2-1	41.00	82	64-16-2
16.00	32	32	41.50	83	64-16-2-1
16.50	33	32-1	42.00	84	64-16-4
17.00	34	32-2	42.50	85	64-16-4-1
17.50	35	32-2-1	43.00	86	64-16-4-2
18.00	36	32-4	43.50	87	64-16-4-2-1
18.50	37	32-4-1	44.00	88	64-16-8
19.00	38	32-4-2	44.50	89	64-16-8-1
19.50	39	32-4-2-1	45.00	90	64-16-8-2
20.00	40	32-8	45.50	91	64-16-8-2-1
20.50	41	32-8-1	46.00	92	64-16-8-4
21.00	42	32-8-2	46.50	93	64-16-8-4-1
21.50	43	32-8-2-1	47.00	94	64-16-8-4-2
22.00	44	32-8-4	47.50	95	64-16-8-4-2-1
22.50	45	32-8-4-1	48.00	96	64-32
23.00	46	32-8-4-2	48.50	97	64-32-1
23.50	47	32-8-4-2-1	49.00	98	64-32-2
24.00	48	32-16	49.50	99	64-32-2-1
24.50	49	32-16-1	50.00	100	64-32-4
25.00	50	32-16-2	64.00	128	128
25.50	51	32-16-2-1	256.00	512	512



9590/9595 WIRING

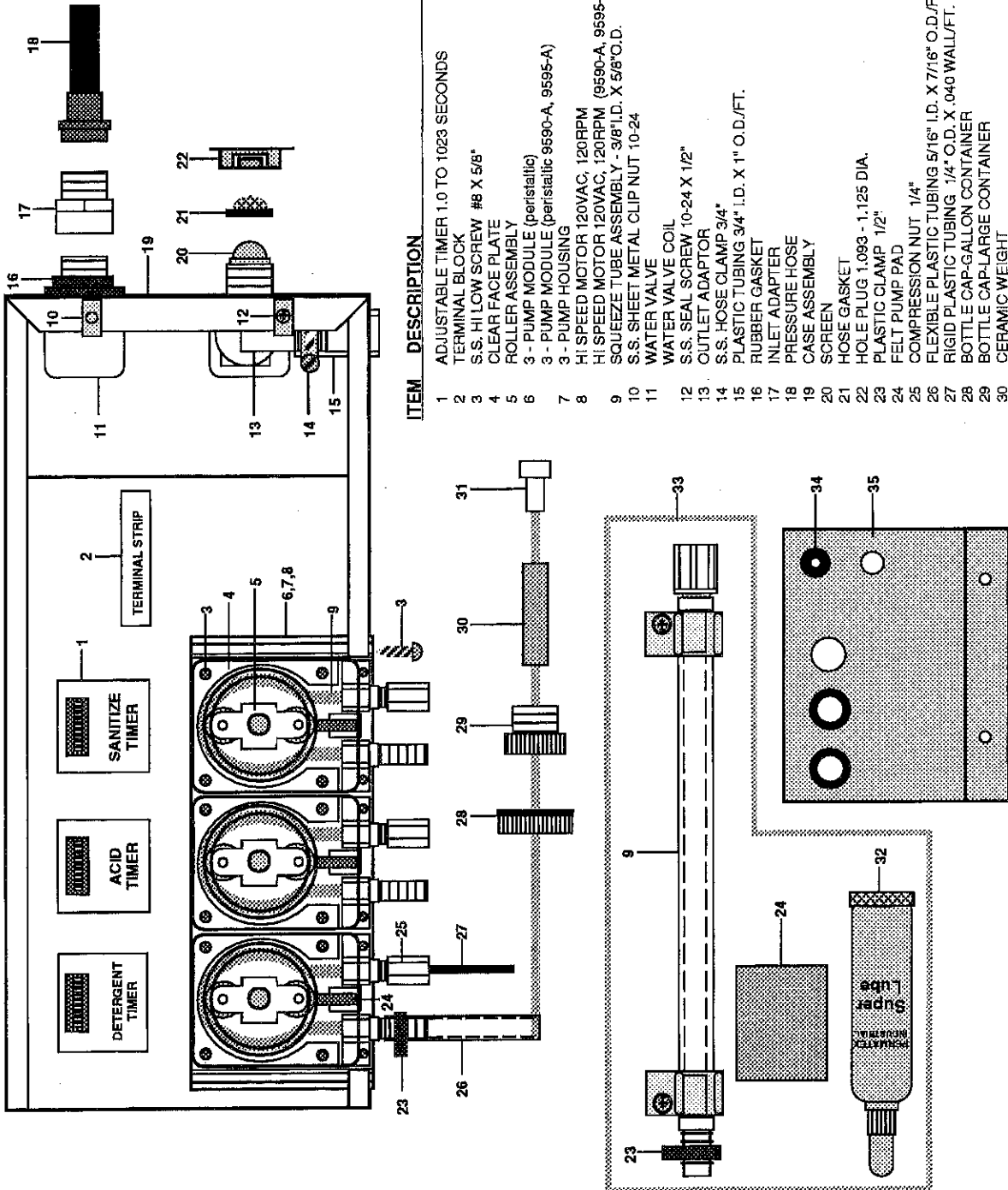


9590-A/9595-A WIRING





9590/9595 PARTS



ITEM	DESCRIPTION	PART NO.
1	ADJUSTABLE TIMER 1.0 TO 1023 SECONDS	8908
2	TERMINAL BLOCK	8836
3	S.S. HI LOW SCREW #8 X 5/8"	6161
4	CLEAR FACE PLATE	9568
5	ROLLER ASSEMBLY	9565
6	3 - PUMP MODULE (peristaltic)	9575
7	3 - PUMP HOUSING	9592
8	HI SPEED MOTOR 120VAC, 120RPM	9566
9	HI SPEED MOTOR 120VAC, 120RPM (9590-A, 9595-A)	9576
10	SQUEEZE TUBE ASSEMBLY - 3/8" I.D. X 5/8" O.D.	9593
11	S.S. SHEET METAL CLIP NUT 10-24	9597
12	WATER VALVE	6136
13	WATER VALVE COIL	8885
14	S.S. SEAL SCREW 10-24 X 1/2"	32551
15	OUTLET ADAPTOR	6140
16	S.S. HOSE CLAMP 3/4"	8876
17	PLASTIC TUBING 3/4" I.D. X 1" O.D./FT.	2319
18	RUBBER GASKET	8868
19	INLET ADAPTER	1085
20	PRESSURE HOSE	8814
21	CASE ASSEMBLY	8869
22	SCREEN	9570
23	HOSE GASKET	32552
24	HOLE PLUG 1.093 - 1.125 DIA.	1403
25	PLASTIC CLAMP 1/2"	9564
26	FELT PUMP PAD	2399
27	COMPRESSION NUT 1/4"	9566
28	FLEXIBLE PLASTIC TUBING 5/16" I.D. X 7/16" O.D./FT.	9569
29	RIGID PLASTIC TUBING 1/4" O.D. X .040 WALL/FT.	1089
30	BOTTLE CAP-GALLON CONTAINER	2784
31	BOTTLE CAP-LARGE CONTAINER	2519
32	CERAMIC WEIGHT	2678
33	SCREEN	2528
34	SYNTHETIC TEFLON GREASE .5oz. TUBE	2530
35	SQUEEZE TUBE REPL. KIT - 3/8" I.D. X 5/8" O.D. TUBE	9587
36	PRESSURE SWITCH BUSHING	9598
37	INPUT PLATE	2576
38		8905



9590/9595 TROUBLESHOOTING GUIDE

PROBLEM	POSSIBLE CAUSE
1. Fail light during the Wash fill.	<ul style="list-style-type: none"> a. No water on Hot input. b. Screen plugged on Hot input. c. Defective Hot coil on water valve. d. Defective main timer.
2. Fail light during the fill of the Second Rinse or Sanitize.	<ul style="list-style-type: none"> a. No water on Cold input. b. Screen plugged on cold input. c. Defective cold coil on water valve. d. Defective main timer.
3. Too much chemical dispensed.	<ul style="list-style-type: none"> a. Defective dispense timer.
4. Too little or no chemical dispensed.	<ul style="list-style-type: none"> a. Air leak in tubing. b. Defective squeeze tube. c. Defective motor. d. Defective dispense timer. e. Defective main timer.
5. Water leaking into wash vat.	<ul style="list-style-type: none"> a. Defective water valve.