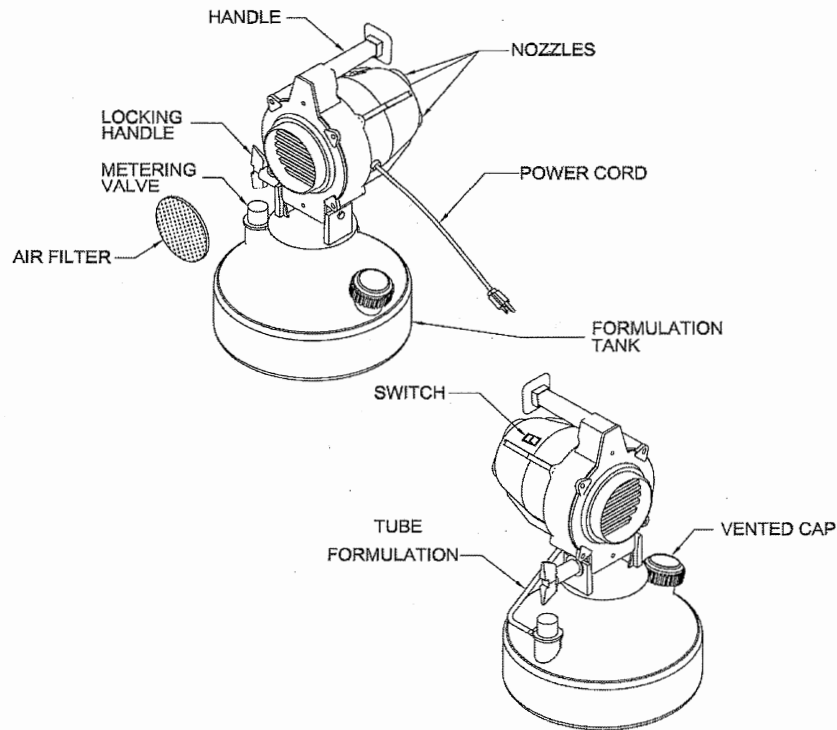


MAINTENANCE

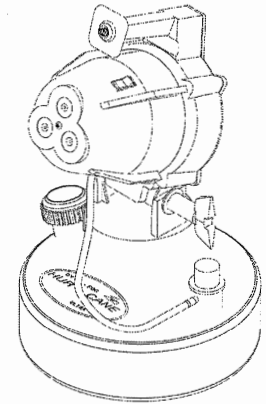
- Periodically clean the formulation tank using a hot water/detergent solution. Fully open the machine valve and operate the machine for 3 to 5 minutes.
- After 400-500 hours of operation, carefully remove the blower assembly and examine the brushes and the commutator bars of the motor. If brushes show excessive wear or damage, replace the blower assembly.
- Clean the Air Intake Filter after every application. If the filter gets wet and dripping while the machine is working, stop the machine and clean / dry the filter.



HURRICANE ULTRA II

OPERATING INSTRUCTIONS

For more information on this fogger visit www.bgequip.com



Safety Precautions

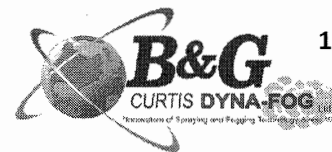
READ AND UNDERSTAND THE SAFETY PRECAUTIONS BEFORE OPERATING THIS FOGGER

Electric Power. This machine must be used with a 3-prong grounded extension cord plugged into a grounded electrical supply. Extension cords must be properly sized and rated for the voltage, current, and length of an individual cord.

Formulations. This machine will operate with standard water- and oil-based formulations of insecticides, disinfectants, and sanitizers. **Note:** Do not use wettable powder (WP) formulations.

Aerosol Concentration. Do not apply more than one gallon of formulation per 50,000 cubic feet (2.7 liters per 1,000 cubic meters) in an enclosed space. Exceeding this concentration is hazardous.

Operation. Turn the flow valve to OFF after each spray application while the motor runs for 1 minute to clear the lines. This will prevent a siphon effect if the unit is knocked over with the valve open.

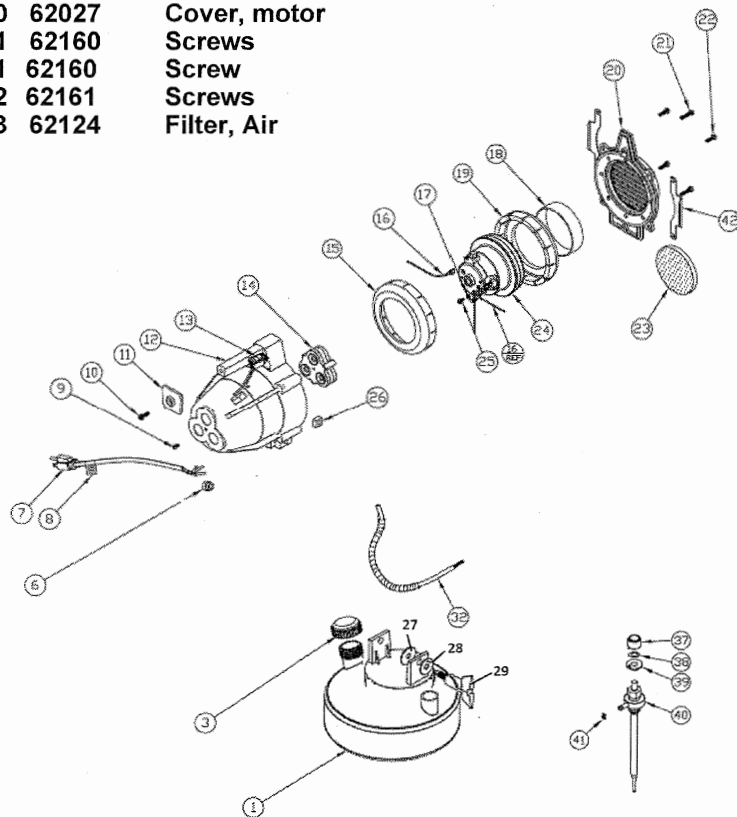


135 Region South Drive, Jackson, GA 30233

Toll Free Customer Service

800-544-8811

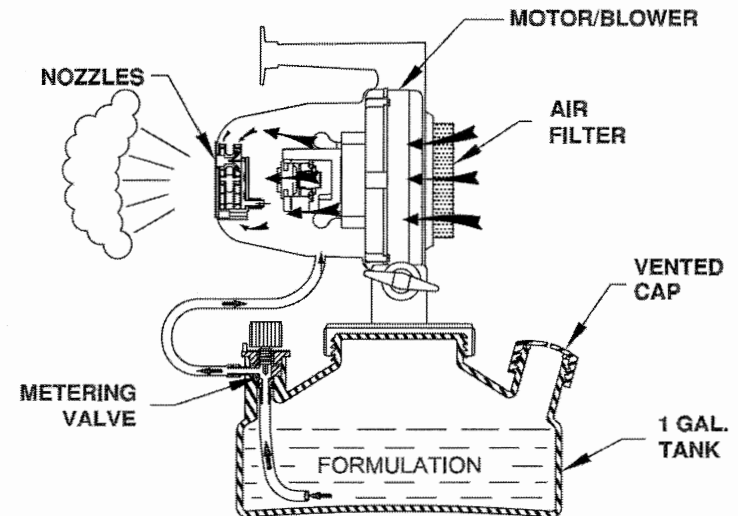
ITEM	PART #	DESCRIPTION
1	95122915	Tank, 1 gallon
3	62135-1	Cap Ay, Tank
6	29108157	Strain relief
7	62031-2	Power Crd, 120V
	62051-1	Power Crd, 220V
9	63261-2	Screw
10	62378	Screw
11	62053-54	Hand Stop
12	62001-54	Housing, Drilled
13	62006-1	Switch, Paddle
14	62045-Blk	Nozzle, Ay
15	62366	Gasket, Foam
16	62471-1	Wire Ay, Motor
17	138530	Washer, Lock
18	62144-1	Spacer, Motor
19	62366-1	Gasket, Foam
20	62027	Cover, motor
21	62160	Screws
21	62160	Screw
22	62161	Screws
23	62124	Filter, Air
24	62147-5	Motor, 120V
	62147-3	Brush Kit 110V
	62147-6	Motor, 240V
	62147-4	Brush Kit 220V
25	9425089	Screw
26	62367	Nut
27	62083	Washer, Friction
28	62128	Washer, Handle
29	62010-54	Locking Handle
32	62227	Tube, PVC
37	64956	Knob Ay.
38	39090	Washer
39	62134-1	Valve Indicator
40	62195-2	Valve Assembly
41	80296-4	Clamp, Hose
42	62233	Bracket, Support



FLOW RATE

- All flow rate information in the table below is based on spraying water. Thicker viscosity liquids will flow at lower rates than what is shown and produce bigger droplet size. Calibrate flow rate before spraying.
- Turning the knob of the Metering Valve regulates the Flow Rate. If the knob is turned clockwise, the flow rate will decrease; if turned counterclockwise, the flow rate will increase.

The average flow rate is shown in the table below at three positions of the Metering Valve knob when using water.



METERING VALVE SETTING	HURRICANE FLOW RATE AND DROPLET SIZE			
	FLOW RATE			DROPLET SIZE MICRONS - VOLUME MEDIA DIAMETER
	Oz /Min	L/H	GPH	
LOW (*)	2.1	4.2	1.1	14 MICRONS
MED (*)	6.7	13.5	3.6	20 MICRONS
MAX (*)	10	19.8	5.2	25 MICRONS