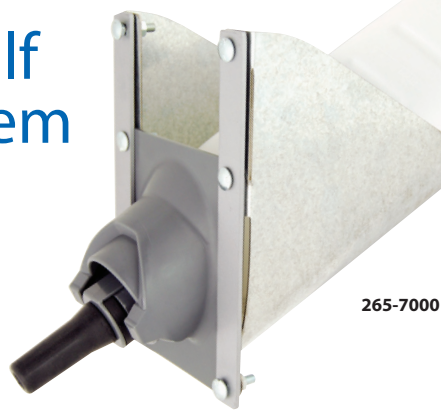




# Milk Bar® Vitality Calf Bottle System



Calves that drink one quart of milk in under two minutes have decreased lactose absorption compared to those who meet the two-minute mark. The decreased lactose absorption negatively impacts daily weight gain and increases the risk of nutritional diarrhea as lactose passes through the intestines too quickly. Calves that nurse too quickly also cross-suckle, causing navel and teat damage to pen mates. It is important that calves suckle hard from birth to weaning to ensure they drink at the slow speed required for full milk curdling and lactose absorption. For optimum health, calves should start drinking from a new Milk Bar Teat and stay with that teat, or a similarly aged teat, until weaning. As teats age they soften, increasing milk flow.

The Milk Bar Vitality Bottle System is incredibly easy to install and cuts time spent raising calves. The Milk Bar Vitality System uses a unique chute design that ensures the Milk Bar Teat is positioned vertically so the calf suckles at the correct speed for healthy digestion.

- 265-7000** Milk Bar Vitality System Complete. System includes alignment chute, holders and bolts, three quart bottle, screw on top, clip, five Milk Bar 265-0002 Teats. Available as each or in packs of five.
- 265-7001** Milk Bar Vitality System Complete. System includes alignment chute, holders and bolts, screw on top, clip, five Milk Bar 265-0002 Teats. Available as each or in packs of five. Calf bottles sold separately.
- 265-7002** Screw-On Top for Milk Bar Vitality System.
- 265-7003** Grey Teat Clip for Milk Bar Vitality System.
- 265-0002** Milk Bar Teat for calves. Pk/ 10.
- 265-0002-2** Milk Bar Teat for calves. Pk/ 2.
- 265-0001** Milk Bar Colostrum Teat for calves. Pk/ 5.
- 999** 3-Quart Screw-Top Bottle Only.
- 913B** 2-Quart Screw-Top Bottle Only.

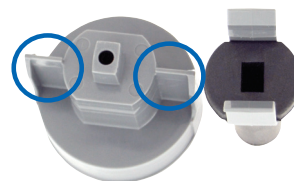


## Fitting the Vitality Bottle Cap

1. For each new calf, fit a new Milk Bar Teat to the Teat Clip.
2. Snap the Teat Clip into the Vitality Bottle Cap.
3. Screw the Vitality Bottle Cap to bottle.
4. Drop the bottle into the chute, self-aligning as it drops in place. If the bottle is sitting back in the chute, the calf will pull it forward while nursing, locking it into place.

## Cleaning the Vitality Bottle

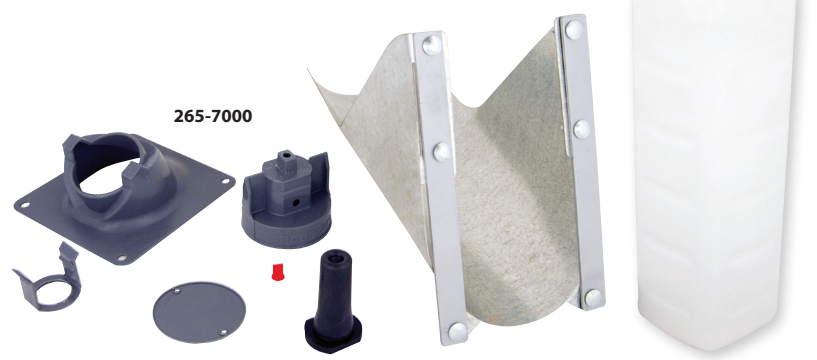
1. Unscrew the cap from bottle.
2. Put the complete cap unit in warm water and alkali detergent. There is no need to take cap parts apart!
3. Wash bottle as you normally would.
4. Discard the teats when calves are weaned.



**265-7002**  
Teat not included.



Teat and screw on cap are easily assembled using plastic connector clip. Cap self-aligns in chute using tabs, circled, ensuring teat is the correct direction for proper flow.



The Coburn Company, Inc. • P O Box 147 • Whitewater, WI 53190 U.S.A.

800 776 7042

262 473 2822

coburn.com

info@coburn.com